

ITP

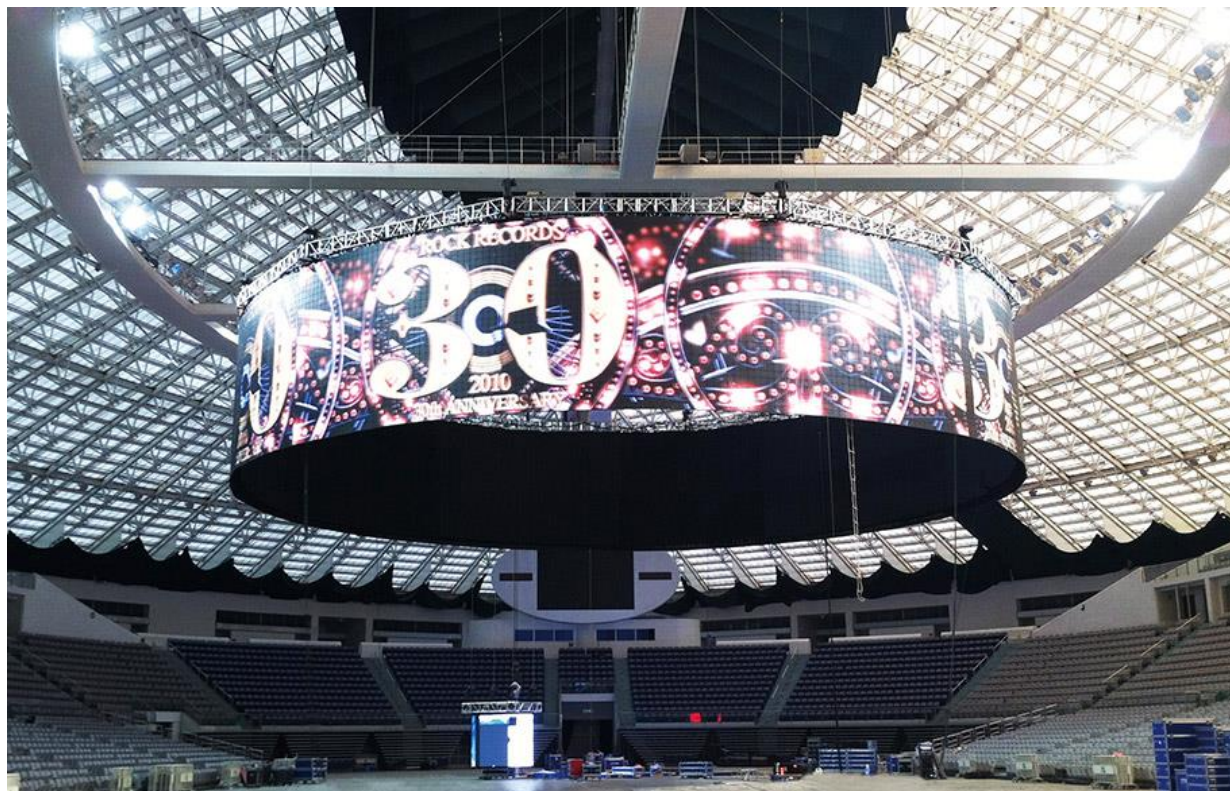
LED display solutions and service providers

Folder screen series

EPICAL
演藝科技



APPLICATION CASE

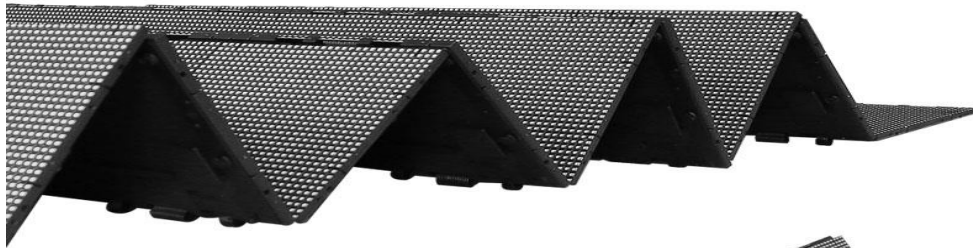
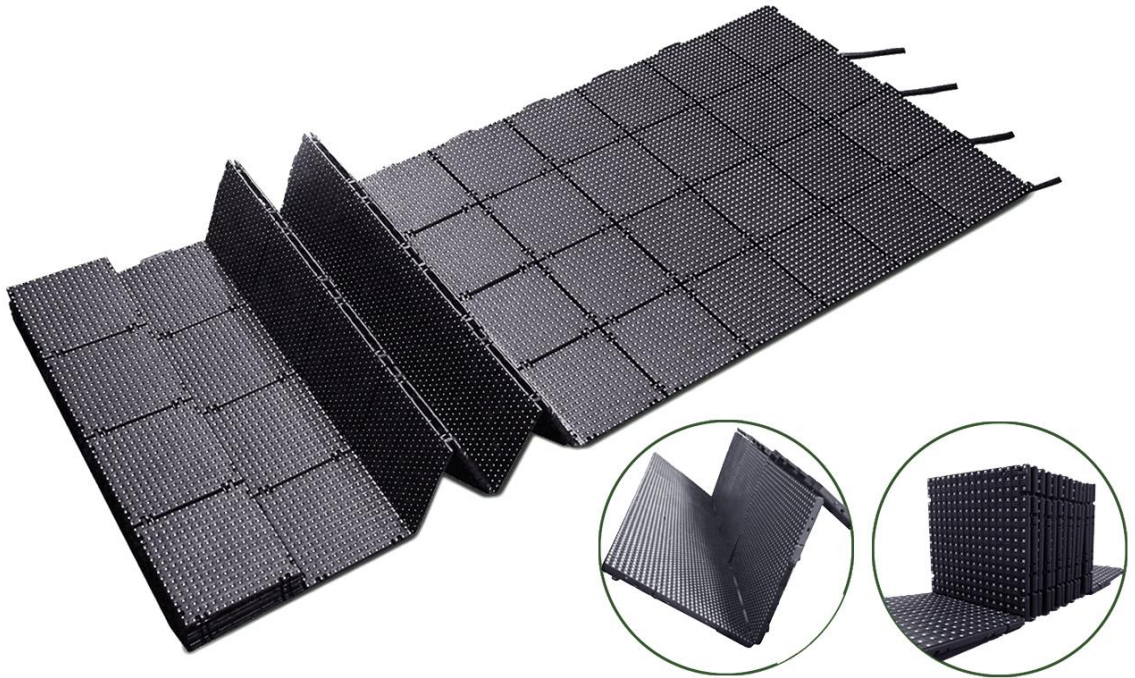


Sole distributor :

EPICAL
演藝科技

Folder screen series

PRODUCT PHOTO



Sole distributor :

EPICAL
演藝科技



Folder screen series (6.9mm)



TECHNICAL SPECIFICATIONS

Product Parameters	F-6mm folder
Pixel Pitch	6.9mm
Cabinet Pixel Matrix	144*576 pixels
Pixel Configuration	3-in-1 SMD 2525
Pixel Density	20736 pixels/m ²
Module Size	250 mm x 250 mm
Cabinet Size	1000 mm x 4000 mm x 18 mm
Cabinet Material	Plastic
Cabinet Weight	51.2 KG
IC	2130
Power Plug	Chogori
Signal Cable	Chogori
Power	24V
System	Mooncell
Visual	
Brightness	≤2500cd/m ²
Viewing Angle	Horizontal ≥120° , Vertical ≥120°
Recommended Minimum Viewing Distance	≥ 6m
Grayscale	Single Color 16384
Color	16bit
Transmittance	0
Brightness Control	100 Levels / Auto Switch
Control System	
Control Mode	DVI
Display Refresh Rate	≥1920Hz
Video Frame Rate	≥60Hz
Transmission Distance	Network Cable 100m, Fiber Cable ≥100m
Power	
Input Voltage (Nominal)	AC 110V—240V, 50—60Hz
Input Power (Max)	720W/m ²
Input Power (Average)	360W/m ²
Working Condition	
Working Temperature	-20°C~+50°C
Storage Temperature	-35°C~+85°C
Working Humidity	10%—90%RH
Lifespan	≥80,000 Hours
Mean Time Between Failure	≥5,000 Hours

Sole distributor :





Folder screen series (8.9mm)



TECHNICAL SPECIFICATIONS

Product Parameters	F-8mm folder
Pixel Pitch	8.9mm
Cabinet Pixel Matrix	112*224 pixels
Pixel Configuration	3-in-1 SMD 3535
Pixel Density	12544 pixels/m ²
Module Size	250 mm x 250 mm
Cabinet Size	1000 mm x 2000 mm x 18 mm
Cabinet Material	Plastic
Cabinet Weight	27.2 KG
IC	5152
Power Plug	Chogori
Signal Cable	Chogori
Power	24V
System	Linsn
Visual	
Brightness	≤3000cd/m ²
Viewing Angle	Horizontal ≥120° , Vertical ≥120°
Recommended Minimum Viewing Distance	≥ 8m
Grayscale	Single Color 16384
Color	16bit
Transmittance	0
Brightness Control	100 Levels / Auto Switch
Control System	
Control Mode	DVI
Display Refresh Rate	≥1920Hz
Video Frame Rate	≥60Hz
Transmission Distance	Network Cable 100m, Fiber Cable ≥100m
Power	
Input Voltage (Nominal)	AC 110V—240V, 50—60Hz
Input Power (Max)	450W/m ²
Input Power (Average)	220W/m ²
Working Condition	
Working Temperature	-20°C~+50°C
Storage Temperature	-35°C~+85°C
Working Humidity	10%—90%RH
Lifespan	≥80,000 Hours
Mean Time Between Failure	≥5,000 Hours

Sole distributor :





Folder screen series (12mm)



TECHNICAL SPECIFICATIONS

Product Parameters	F-12mm folder
Pixel Pitch	12mm
Cabinet Pixel Matrix	64*256 pixels
Pixel Configuration	3-in-1 SMD 3535
Pixel Density	6944 pixels/m ²
Module Size	192 mm x 192 mm
Cabinet Size	768 mm x 3072 mm x 10 mm
Cabinet Material	Plastic
Cabinet Weight	18.9 KG
IC	MY9268
Power Plug	Chogori
Signal Cable	Chogori
Power	24V
System	DBstar
Visual	
Brightness	≤1300cd/m ²
Viewing Angle	Horizontal ≥120° , Vertical ≥120°
Recommended Minimum Viewing Distance	≥ 12m
Grayscale	Single Color 16384
Color	16bit
Transmittance	0
Brightness Control	100 Levels / Auto Switch
Control System	
Control Mode	DVI
Display Refresh Rate	≥1920Hz
Video Frame Rate	≥60Hz
Transmission Distance	Network Cable 100m, Fiber Cable ≥100m
Power	
Input Voltage (Nominal)	AC 110V—240V, 50—60Hz
Input Power (Max)	200W/m ²
Input Power (Average)	80W/m ²
Working Condition	
Working Temperature	-20°C~+50°C
Storage Temperature	-35°C~+85°C
Working Humidity	10%—90%RH
Lifespan	≥80,000 Hours
Mean Time Between Failure	≥5,000 Hours

Sole distributor :

EPICAL

演藝科技