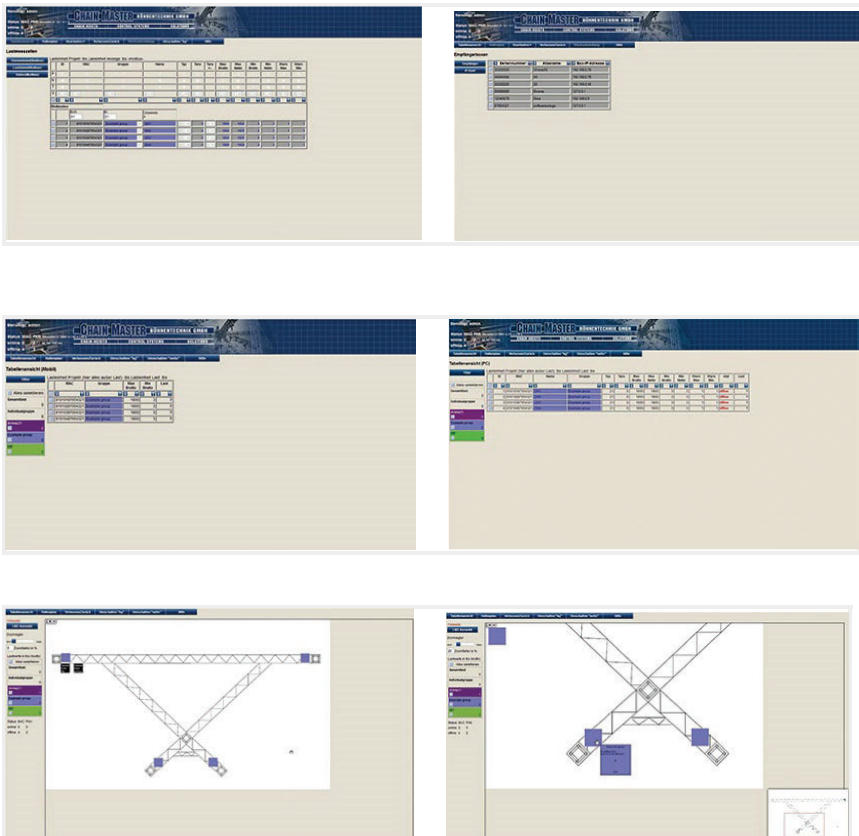


# Chain Master (made in Germany)

## Load-2-Net – The Network Solution

The ChainMaster Load-2-Net load-sensing system is the professional network solution for the monitoring of loads and suspension points in the course of a wide range of applications. Load-2-Net is suitable for mobile operation as well as professional use in fixed installations. As a browser-based system, it can even work independently of the existing operating system, without requiring the installation of software. The extensive range of features includes the evaluation and indication of load values and log books, the integration of hall plans, the configuration of individual load groups and even multi-user functions. The option exists of sending warning messages to the technician responsible via SMS or e-mail. All the data can also be transmitted to WLAN-compatible devices such as smartphones and tablets using standard access points. We are happy to create project-specific infrastructures upon enquiry. Contact us!



### Basic Features

- Browser-based Software
- Displaying of Load Values
- Password Management
- Failure Log Book, User Log Book
- Integration of Drawings
- Load Group Configuration and Colored Caution Indication
- Evaluation of Gross/Net/Tara
- Load Cell Status Indication
- Data Transmission Monitoring
- Top View and Table View



### Load-2-Net Box 8-Channel

8-ch Load-2-Net Interface-Box, Inputs with 16-Bit resolution, 8 x XLR-4 Input 4–20 mA, Integrated Web-Server, Compact Aluminum Stagebox, Output Ethernet Interface, Linkable via 3 Ethernet-Ports with Fast Ethernet Switch, Neutrik powerCON Connector, Voltage: 88–264 VAC/47–63Hz, 19" Device Available (Option), W-LAN Output Available (Option)

HxBxT: 231x169x124 mm



### Load-2-Net Box 16-Channel

16-ch Load-2-Net Interface-Box, Inputs with 16-Bit resolution, 16 x XLR-4 Input 4–20 mA, Integrated Web-Server, Compact Aluminium Stagebox, Output Ethernet Interface, Linkable via 3 Ethernet-Ports with Fast Ethernet Switch, Neutrik powerCON Connector, Voltage: 88–264 VAC/47–63Hz, 19" Device Available (Option), W-LAN Output Available (Option)

HxBxT: 361x169x124 mm